



SM-33 Series

MICRO SWITCH



SM-33D



SM-33F



SM-33F



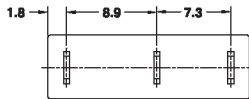
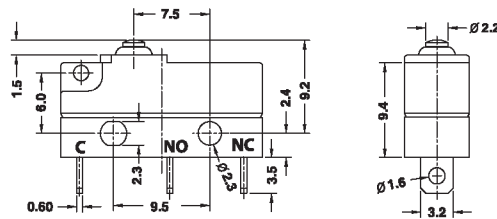
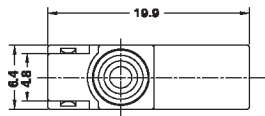
SM-33F

Specification:

3(1)A	250VAC	T85	5E4
3(3)A	250VAC	T85	
8(2)A	250VAC	40T105	



3A	250VAC	T105
6A	125VAC	T105
6A	250VAC	T105
12A	125VAC	T105
8A	250VAC	T105
15A	125VAC	T105
1/3HP	250VAC	
1/6HP	125VAC	



SM-33

D		S		3		W1		BK		S		0		Internal Use Only	
Function	Current	*Operating Force Options		Housing Type		Housing Color		Terminal Type		Lever					
D (ON)-OFF	S 3(1)A 250VAC	1	60 g.f	1 Standard		BK Black		S		0	None				
E ON-(OFF)	6A 125VAC	2	100 g.f	W1 Waterproof				B	 (Only For W2)	1					
F ON-(ON)	M 8(2)A 250VAC 12A 125VAC	3	150 g.f	W2 Waterproof				C	 (Only For W2)						
	L 8(2)A 250VAC 3(3)A 250VAC 5E4 15A 125VAC 1/3HP 250VAC 1/6HP 125VAC	4	200 g.f												

* Operating force measured at the knob