



SR-20 Series

ROCKER SWITCH



SR-20N (Glossy Button)



SR-20A (Glossy Button)



SR-20N



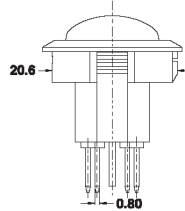
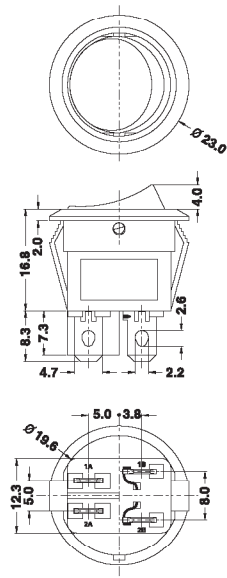
SR-20N (R)

Specification:

6(1)A 250VAC T85
13(2)A 250VAC T85

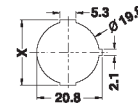


6A 250VAC T125
12A 125VAC



Suggested panel hole size

Panel thickness	x
0.75-1.25	20.3
1.25-2.0	20.8
2.0-3.0	21.1



SR-20—

N		2		M		Q		BK		RE		6		0		0		4		00			
Function	No. of Poles	Current		Terminal Type		Base Color		Button Color		Button Type		Printing		Color of Printing		Lamp Voltage		Small Len Color		Internal Use Only			
A ON-OFF	1 Single	M 6(1)A 250VAC				BK Black	BK Black	2		 (Matte Surface)	0 None	0 None	0 None	0 None	00 None								
N ON-OFF w/lamp	2 Double	12A 125VAC				WT White	WT White				1		1 White	1 12V	RE Red								
		L 13(2)A 250VAC				GE Grey	GE Grey	R		 (Glossy Surface)	2		2 Black	2 24V	GR Green								
		12A 125VAC				RE Red	RE Red				3		3 Red	3 110V	BL Blue								
						GR Green	GR Green	6		 (Glossy Surface)	8		4 Blue	4 220V	AM Amber								
						BL Blue	BL Blue				9		5 Yellow										
						OR Orange	OR Orange	A		 (Glossy Surface)	A												
						YE Yellow	AM Amber																
						YE Yellow	YE Yellow																